

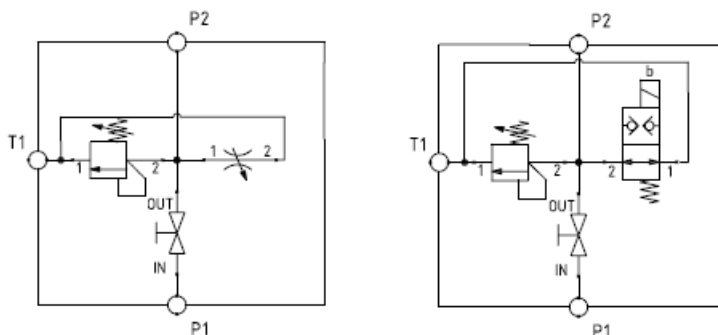
Safety Block User Instructions

The MGR Fluid Power Accumulator Safety Block has been designed to be installed by competent personnel who understand hydraulic schematics and safe hydraulic installation practices. Hydraulic fittings which connect the accumulator and the hydraulics system to the safety block must be rated to the pressure of the system. If in doubt, please call our office.

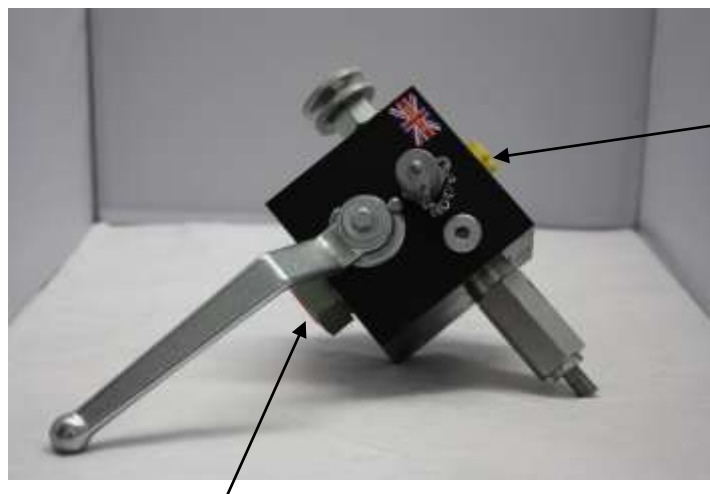
The purpose of the safety block is to protect the accumulator from over pressure, provide an isolation and pressure vent down function. The vent down function is either manual or electrical.

Connections

High pressure fittings are required for connection to the system and accumulator. The drain line should be routed to the reservoir at low pressure, without restrictions as this could affect the drain process and add to the pressure setting of the relief valve.



P1 – System connection
 P2 – Accumulator connection
 T1 – drain connection



Accumulator connection P2

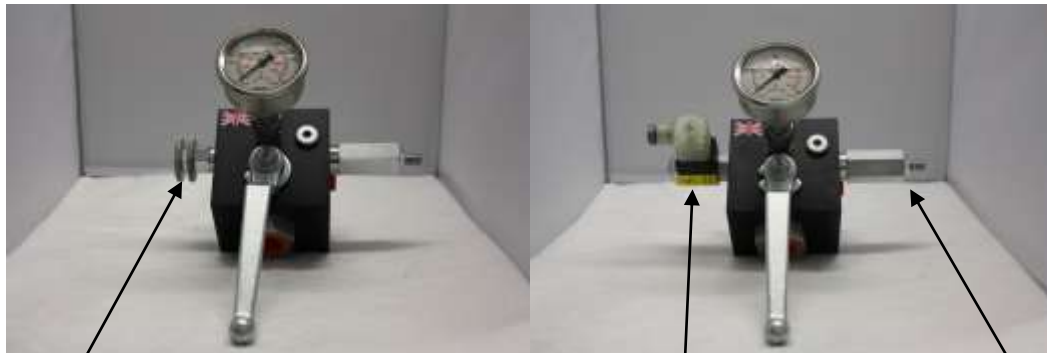
System connection P1



Accumulator isolation valve

Drain connection T1 - to tank

Vent Options



Vent valve to be turned anti-clockwise to vent. Valves must be closed when the system is in operation or leakage can occur which can affect the system operation

The solenoid valve is normally open and needs a 24 V DC signal to close and raise pressure. When the system is shut down the signal should be removed from the valve and the accumulator vented.

Do not tamper with the relief valve this has been factory preset.

We offer an orifice fitting for the electrically operated vent block which slows the accumulator drain rate.

ALWAYS CHECK THAT PRESSURE IS VENTED FROM THE ACCUMULATOR, BY CHECKING THE PRESSURE GAUGE ON THE BLOCK (WITH THE ISOLATION VALVE OPEN), BEFORE WORKING ON THE HYDRAULIC SYSTEM.